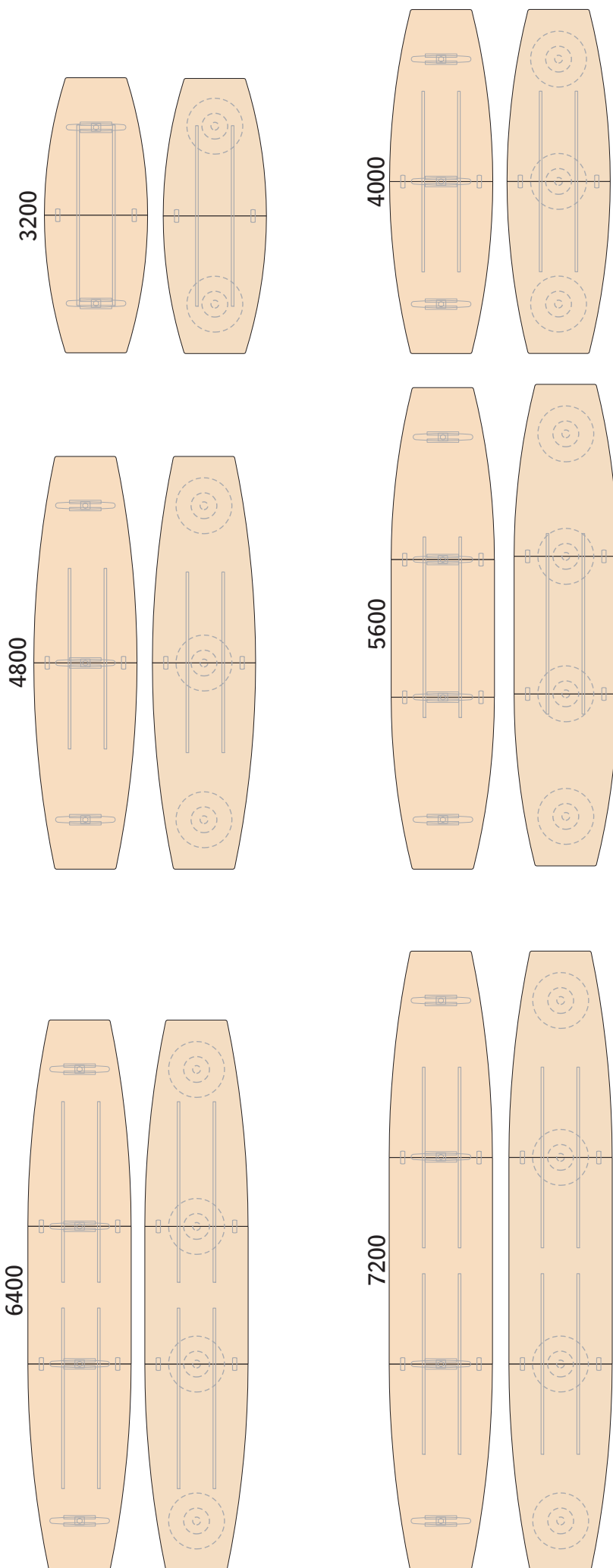


# Monteringsanvisning - Assembly instruction

Connect mötesbord kombination 05-10  
Connect meeting tables combination 05-10



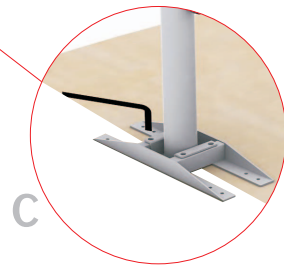
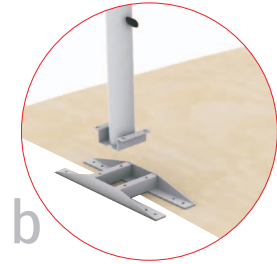
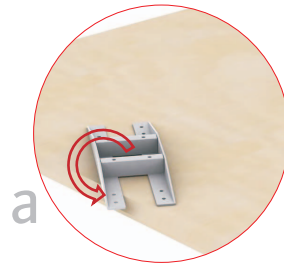
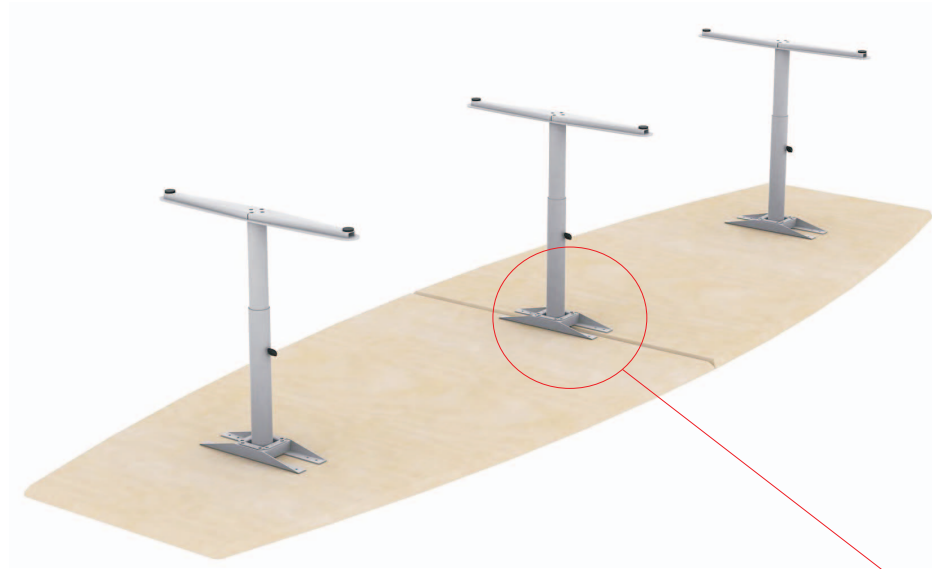
AB Edsbyverken, Box 300, SE-828 25 Edsbyn  
Tel/Phone +46 (0)271-27500, Fax +46 (0)271-27501  
www.edsbyn.com

Date: 2009-03-19

Nr: 00530162

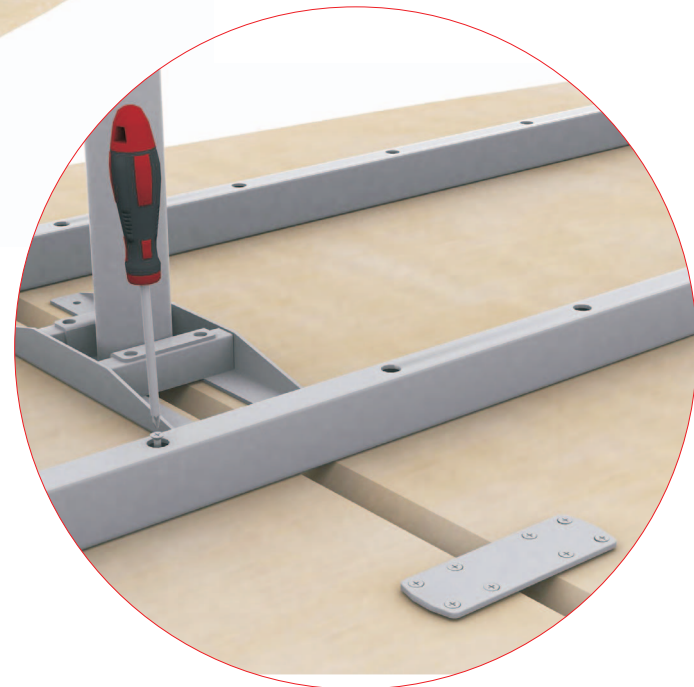
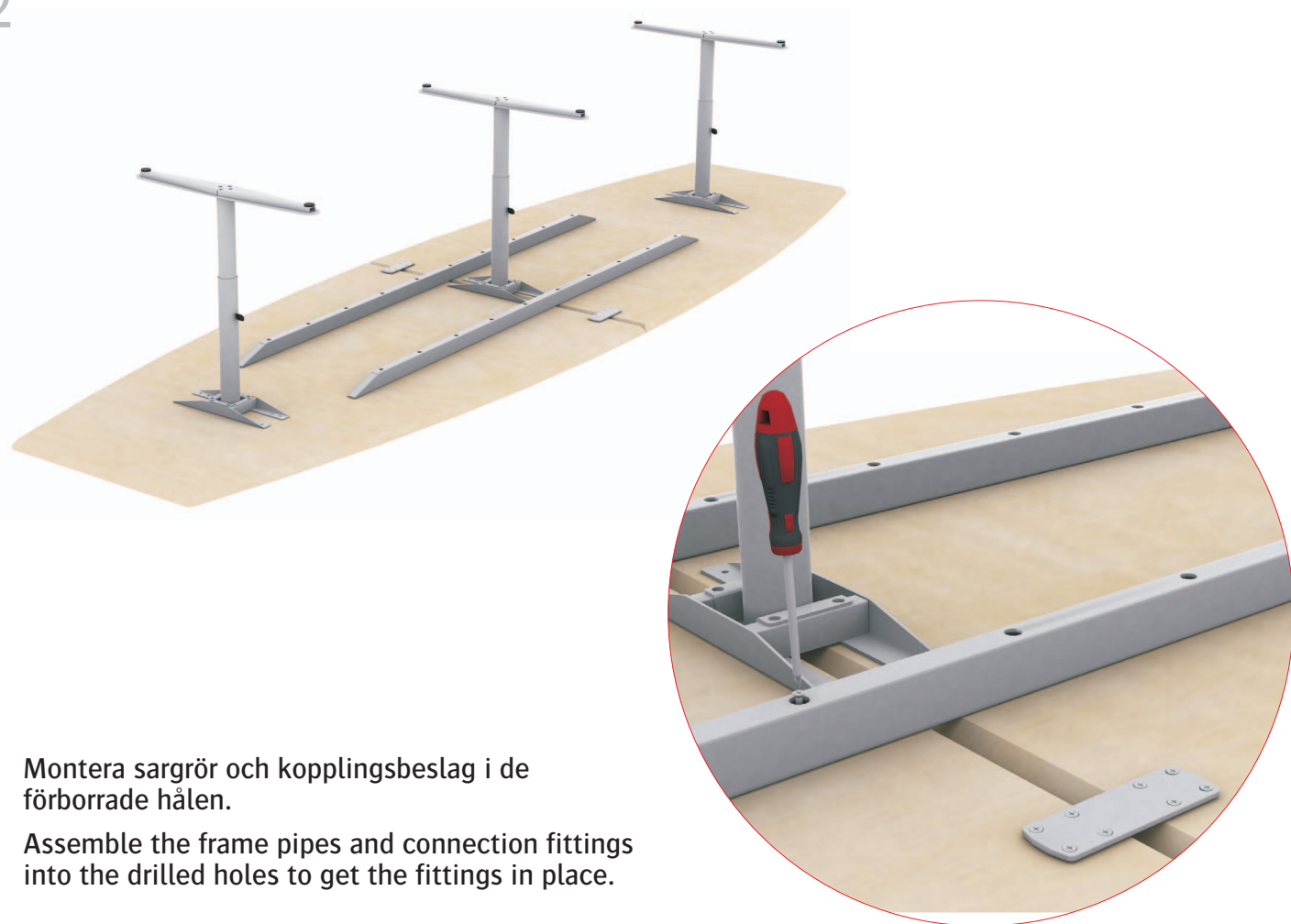
1

## T-stativ / T-stand



- a. Vrid skivfästet vid skarven 180 grader och skruva fast i de förborrade hålen.  
 a. Turn the top hold between the tops 180 degrees and fasten into the drilled holes.
- c. Montera gavlarna med M8 bultar.  
 c. Assemble the gable with M8 screws.

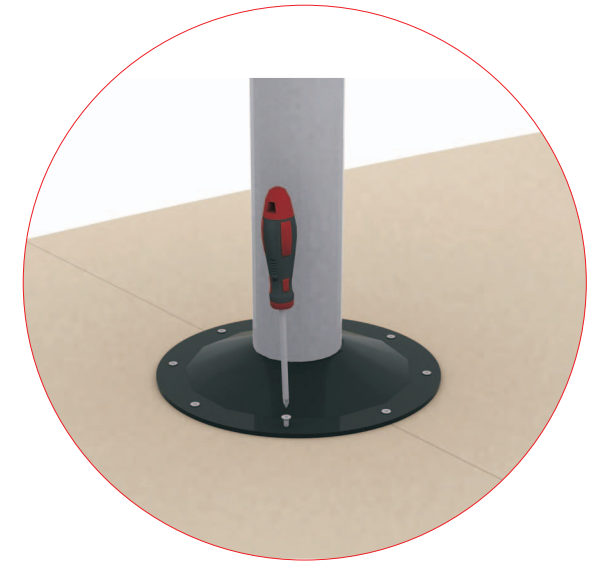
2



- Montera sargrör och kopplingsbeslag i de förborrade hålen.  
 Assemble the frame pipes and connection fittings into the drilled holes to get the fittings in place.

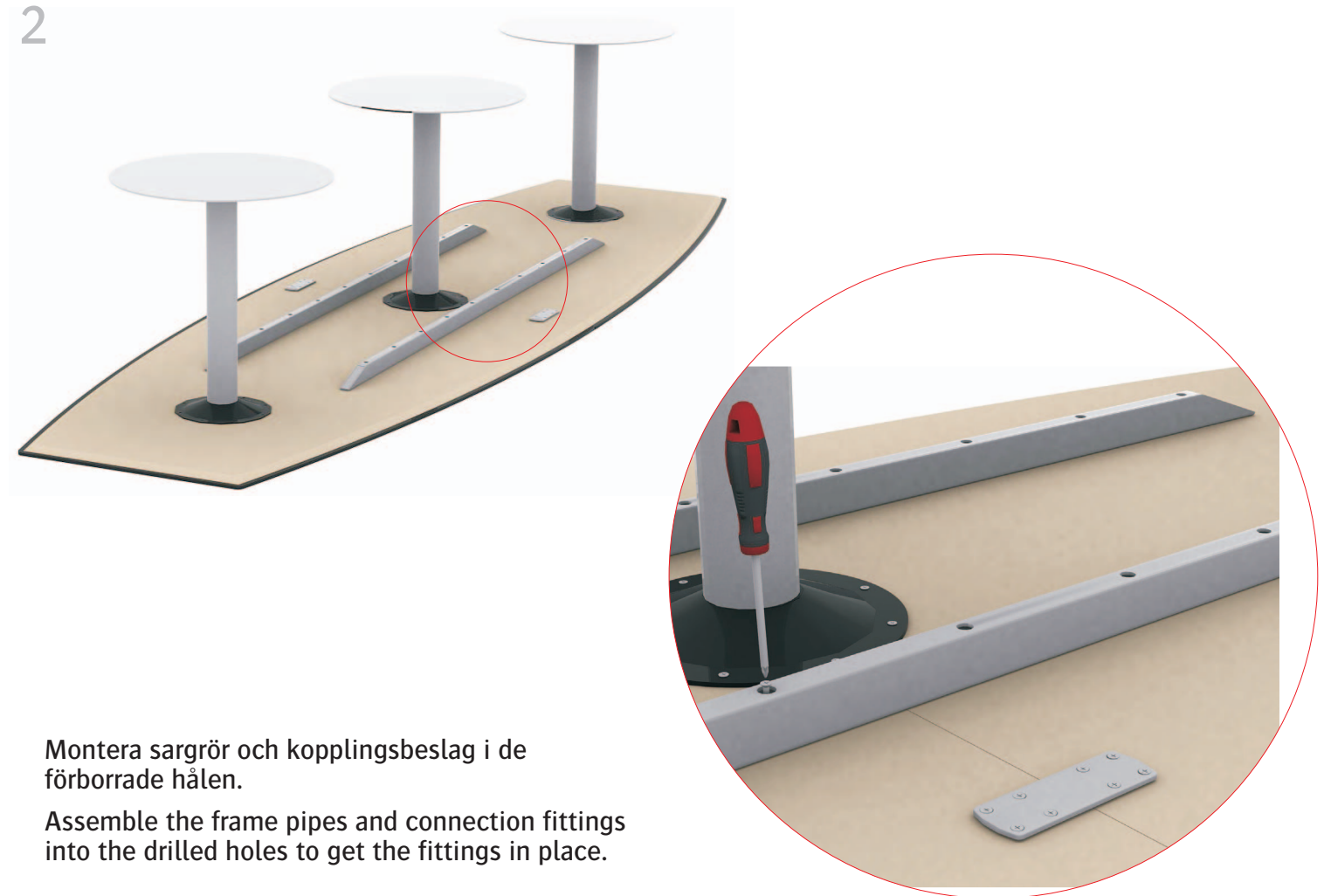
1

## Tallriksfot / Plate foot



- Dra åt skruvarna ordentligt i de förborrade hålen.  
 Fasten the screws into the drilled holes.

2



- Montera sargrör och kopplingsbeslag i de förborrade hålen.  
 Assemble the frame pipes and connection fittings into the drilled holes to get the fittings in place.